

ROCK SOLID HELP FOR YOUR BOTTOM LINE



MICHELIN  **XDR²**

The REFERENCE for rigid dump truck tires

- Profitability
- Safety
- Better for the environment

Profitability - Safety - Environment **XDR2**

1

A LONGER LASTING TIRE

Extended tread life

>> **Tread volume** increased from 4% to 20%^(*)

- Up to 20% additional tread volume

(*) Depending on the space restrictions on the trucks

>> **Innovative cooling system**

10% more ventilated during the first 50% of tread life...

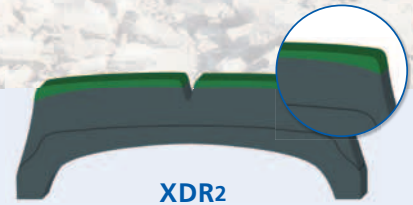
- Cool running innovative tread rubber compound
- New optimized sculpture with cooling vents

>> **New tread pattern**

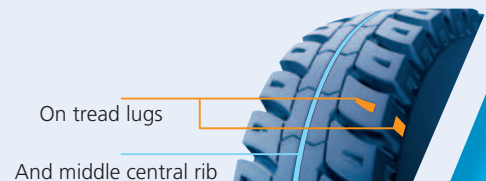
- Full depth tread blocks
- New optimized sculpture
 - Self cleaning tread pattern
 - 13% larger central lug than XDR
- More rubber volume
 - Significant cooling capabilities
 - Increasing contact patch when the tire is half worn



Non directional design



XDR2



On tread lugs

And middle central rib



XDR2

XDR2
at 50% worn

Longer lasting casing and bead

>> **C² technology**

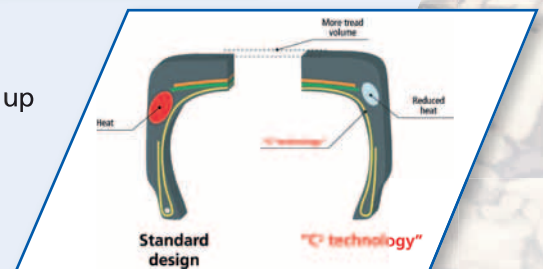
- C² technology (Improved casing geometry) reduces heat build up

>> **Improved lower sidewall and stronger bead**

- An exclusive manufacturing process allowing for the optimal curing of the bead area
- It improves the mechanical characteristics of the lower sidewall

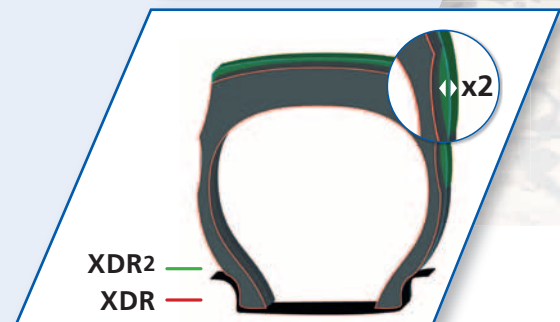
>> **Improved sidewall design**

- Smoother profile⁽¹⁾ has better distribution of sidewall stress
 - Reduced propagation of sidewall cuts
- (1) Providing reduced rubber tension for better resistance to cuts



Standard design

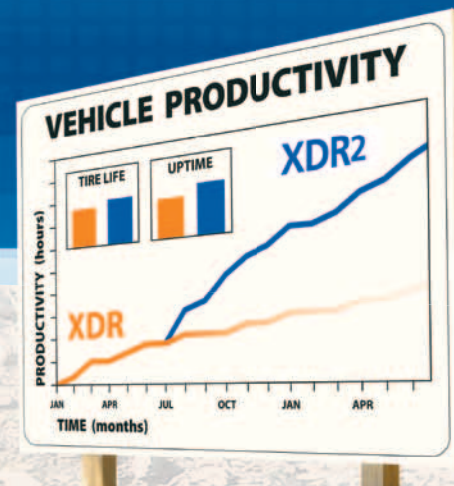
"C² technology"



XDR2
XDR

No compromise on TKPH

The REFERENCE for rigid dump truck tires



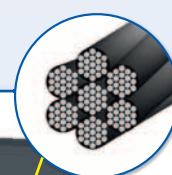
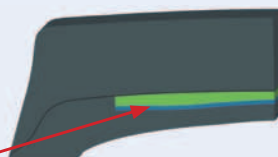
2 SUPERIOR RESISTANCE TO CUTS AND AGGRESSIONS

Thicker undertread up to 10%^(*)

- Between the protection ply and base of tread^(*)
- (*) varies by dimension

Stronger working plies

Protection plies + 60% Stronger



"Corrosion isolating cables"
interpenetration of rubber steel preventing from extension of a corrosion source



Better shielding effect

3 IMPROVED ENVIRONMENTAL SUSTAINABILITY

Fewer raw materials consumed

- Longer lasting tire
- Better reparability and retreadability due to Michelin casing
- XDR2 is lighter weight than competitors

Environmentally-friendly tire design

- Free of aromatic oils

Cleaner manufacturing process

- All our Earthmover factories are ISO 14001 certified
- Michelin environmental impact has been reduced by 22% since 2005



Profitability - Safety - Environment **XDR2**

The REFERENCE for rigid dump truck tires

SIZE	Compound	Tread depth	
		mm	32 nd inch
Available			
27.00 R 49 E4R TL **	A, B4, B	90	113
33.00 R 51 E4R TL **	B4, B, C4	94	118
37.00 R 57 E4R TL **	B4, B, C4, C	102	130
40.00 R 57 E4R TL **	B4, B, C4	98	123
40.00 R 57 E4R TL ** XDR+	B4, B, C4, C	97	123
53/80 R 63 E4R TL **	B4, B, C4	110	139
56/80 R 63 E4R TL **	B4, B, C4	110	139
59/80 R 63 E4R TL **	B4, B, C4	118	149

Michelin recommendations

XDR2 IS MEMS READY

Easy installation of MEMS tags (electronic sensors)
Easy to recognize with "MEMS READY" sidewall marking

**MEMS
Ready**

PATCH TO BE USED
ONLY WITH MICHELIN
APPROVED DEVICE

www.michelinearthmover.com